



ACTIVE GLOBAL
HOME & COMMUNITY CARE

HOME & COMMUNITY CARE SERVICES

Integrated • Subsidised • Affordable



Call our 24/7 hotline at 6536 0086

www.activeglobalcaregiver.sg

HOME PERSONAL CARE

Provides long-term subsidised* home-based personal care to support frail and home-bound elderly who need assistance with daily activities.

Service Scope

- Personal hygiene
- Assistance with activities of daily living (ADLs) and instrumental activities of daily living (iADL)
- Mind stimulating activities
- Elder-sitting and respite
- Performing simple maintenance exercises

Operational hours

- Mondays to Saturdays: 8 am – 8 pm.
- After hours, Sundays & Public Holidays subject to availability.



HOME NURSING

Provides subsidised* specific nursing care/procedure(s) that can only be done by a trained nurse to home-bound elderly with chronic conditions or disabilities.

Service Scope

- Post-surgical management, e.g. administration of injections, care of central venous line, tracheostomy or drainage tubes;
- Wound management;
- Maintenance/changing of urinary catheters and drainage tubes, as applicable;
- Stoma care, e.g. colostomy and ileostomy care;
- Insertion of nasogastric tube ("NGT") and tube feeding;
- Assistance with bowel elimination, e.g. enema or manual evacuation;
- Monitoring of the Client's medical condition, e.g. blood pressure and blood sugar checks;
- Providing caregiver education and training with regards to various aspects of care, e.g. prevention of falls, pressure sores, proper feeding techniques, etc.;
- Advice on activities of daily living, e.g. nutrition counselling and education;
- Monitoring of medication compliance and proper taking of medication;
- Administering, supervision and packing of medication

Operational hours

- Mondays to Saturdays: 8 am – 8 pm.
- After hours, Sundays & Public Holidays subject to availability.

*Subsidy based on Household Means Testing

HOME MEDICAL

Provides long-term subsidised* medical care to home-bound elderly with chronic conditions or disabilities who require continuing or long term medical care.

Service Scope

- Comprehensive care assessment and management of chronic, uncomplicated acute/sub-acute medical conditions
- Prescription of appropriate acute and chronic medicines;
- Educating the Client and caregiver on the Client's medical conditions and the management plan;
- Performing minor medical procedures such as simple wound debridement, intra-articular injections etc.

Operational hours

- Mondays to Saturdays: 9 am – 6 pm.
- After hours, Sundays & Public Holidays subject to availability.

*Subsidy based on Household Means Testing



© Active Global

HOME THERAPY

Provides subsidised* home-based rehab/exercise training to support frail and home-bound elderly who are not suitable for, or unable to access community-based rehabilitation services.

Example conditions for Home Therapy suitability:

- Low sitting tolerance.
- Lack of barrier free-access from client's house or no available caregiver/escort to bring client from home to centre.
- Any other reasons that may result in client being unable to admit into a community hospital or centre-based rehabilitation facility in a timely manner.

Home Therapy Service Scope

- Functional mobility training and gait training;
- Active and passive exercises to improve or restore range of motion, physical strength, flexibility, co-ordination, balance and endurance;
- Treatment to relieve pain, such as through electro-physical agents;
- Caregiver training and Client education; and
- Community integration activities.

Operational hours

- Mondays to Fridays: 9 am – 6 pm.



© Active Global

*Subsidy based on Household Means Testing

SENIOR CARE CENTRES

DAY CARE SERVICES (maintenance, Dementia, Enhanced dementia)

Provides subsidised* day care services for frail clients with care needs to receive professional care during day time.

Service Scope

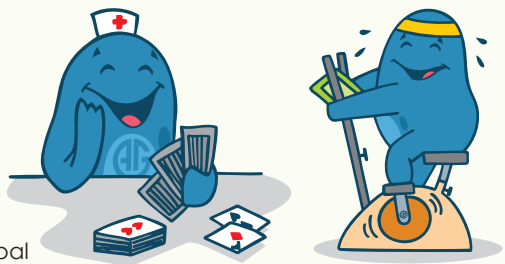
- Elder-sitting
- Assistance with ADLs and personal care needs.
- Meals and medication compliance.
- Meaningful activities to slow down functional and mental decline.

COMMUNITY REHABILITATION

Provides subsidised* rehabilitation services for clients assessed by a SMC-registered medical practitioner or registered therapist as fit for rehabilitation.

Service Scope

- Functional mobility training and gait training;
- Active and passive exercises to improve or restore range of motion, physical strength, flexibility, co-ordination, balance and endurance;
- Re-training in ADL & iADLs.
- Exercises to improve range of motion mostly in upper limb extremities.
- Dysphagia (swallowing difficulties) management;
- Voice rehabilitation



SENIOR CARE CENTRES

CENTRE-BASED NURSING

Provides subsidised* nursing services for clients assessed by a SMC-registered medical practitioner requiring a clinical procedure that can only be done by a trained nurse.

Service Scope

- Post-surgical wound care and wound management.
- Insertion of nasogastric tube (NGT)
- Percutaneous Endoscopic Gastrostomy (PEG) tube care
- Urinary catheter care and change of female urinary catheter.
- Tracheostomy, Stoma and Nephrostomy care.
- Assistance with bowel elimination.

CENTRE-BASED WEEKEND RESPITE

Provides subsidised* day care services for frail or dementia clients with care needs to give their caregivers some respite and support.

Eligibility criteria: Service available both on one-time basis and on recurring basis, for clients who need care on Saturdays and/or Sundays only.

Service Scope

- Custodial Care or Elder-sitting.
- Assistance with ADLs & Care needs
- Recreational, Physical and Social activities.



SENIOR CARE CENTRE OPERATIONAL HOURS:

- Monday to Friday: 7am – 8pm
- Saturday, Sunday & Public Holiday: 9am – 5pm



LIVE-IN CAREGIVERS

- A Live-In Caregiver takes care of an elderly or sick client in his or her home. The Live-In Caregiver is a personal help, health aide, and companion for a patient.
- Duties mainly focus on Activities of Daily Living (hygiene, feeding, mobilisation, exercise), and their patient's emotional and social well-being.
- Live-In Caregivers' monthly salary ranges from S\$600 to S\$1,000.

CONTACT US

PHONE – 24/7 Hotline

+65 6536 0086

EMAIL

Singapore@activeglobalcaregiver.com

WALK-IN

Novena

51 Goldhill Plaza
#12-11, S(308900)

Ghim Moh Senior Care Centre & Active Ageing Hub

Active Global Ghim Moh Edge
31A Ghim Moh Link, #01-11, S(272031)

Telok Blangah Senior Care Centre & Active Ageing Hub

Active Global Telok Blangah ParcView
92 Telok Blangah Street 31, #01-255, S(100092)



www.activeglobalcaregiver.sg